

# Uniform Policy

Primary



# Primary Uniform Policy

Unity College adheres to a clear uniform policy and expects students to wear the College uniform with pride and diligence. The uniform is compulsory and a means of: facilitating identification of school students; fostering a sense of belonging, and; promoting respect among students by removing visible evidence of economic or social differences.

## The College expectations are:

1. Complete and correct uniform is to be worn between home and school at all times.
2. Uniforms are to be clean, ironed and in good condition.
3. All items of uniform should be clearly and permanently marked with the student's name.
4. School shoes should be clean and tidy.

**Failure to wear the College uniform correctly will be referred to as a serious matter.** If there is a genuine reason for a student not wearing the full, correct College uniform parents are requested to notify the child's classroom teacher in person, via a note or email. If a student persists in not wearing the uniform correctly, then the student will be required to complete a period of reflection, and repeated failure will result in a meeting with parents and the students Class Teacher and/or a member of the College Leadership Team.

## Shoes

Students require one pair of shoes, which will be worn with both their formal and sports uniform.

Shoes must be:

**Fully black in colour**, including logos, soles, and laces

**Made of leather or a leather-like material** (not canvas or soft fabric)

**Suitable for running around and participating in sport and physical activity**

**Completely cover the top of the foot for safety reasons** (no Mary-Jane style)

This change in the 2026 school year, reinforces our commitment to equity, simplicity, and pride in presentation. If in doubt, please contact the College Uniform Shop prior to purchasing.



## **Tracksuit**

The College tracksuit is an optional sports uniform item. It is able to be worn in place of the sports uniform at the appropriate times. It may not be worn as part of the formal uniform.

## **College Bag**

The College bag is to be used at all times. If it is in need of repair at any time, this should be done as quickly as possible and a note should be placed in the student's diary to indicate that the bag is being repaired including approximately how long it will be until the bag is ready to use again. The Uniform Shop also stocks a school bag with wheels, see in-store for details.

## **T-Shirts**

Visible t-shirts are NOT to be worn under the College shirt or sports shirt.

## **Personal Presentation**

The wearing of make-up and nail polish is not permitted. Body art of any form must not be visible. Hair must be well groomed and of a natural colour. Shoulder length hair or longer will be tied back and fringes will be worn in a manner which keeps hair off the face, out of the eyes and off the shoulders. Hair ties, headbands and ribbons are to be College colours or of the student's College House colour as sold by the Uniform Shop. Hairstyles should accommodate the wearing of the College hat with ease. Extreme (or fashion) hairstyles and/or colours are not acceptable. Hair will be off the face and all boys will be clean-shaven at all times. (No horsies, mullets, tails, shaved line designs/tracks)

## **Jewellery**

The following jewellery items are permitted to be worn:

- **Only ONE** pair of small studs or sleepers, in the lower ear lobe.
- A Christian religious symbol on a plain gold or silver chain – both symbol and chain are to be conservative. Please ensure this is not visible above the formal uniform collar.

The following items of decoration are NOT permitted to be worn:

- Tongue, eyebrow, lip or nose studs
- Charity bands/bracelets/bangles
- Rings
- Spacers of any type
- Visible permanent markings
- Necklaces other than with a Christian religious symbol

Inappropriate jewellery items will be confiscated and kept by the teacher until the end of the day.

# Prep Formal Uniform Policy

Prep Girls	Prep Boys
Regulation Unity College Prep polo shirt, sports shorts and socks	Regulation Unity College Prep polo shirt, sports shorts and socks
Primary College Formal Hat	Primary College Formal Hat
Formal Shoes (same as Sports Shoes) are to be; <b>Fully black in colour</b> , including logos, soles, and laces (Prep may be velcro) <b>Made of leather or a leather-like material</b> (not canvas or soft fabric) <b>Suitable for running around and participating in sport and physical activity, completely covering the top of the foot (see page 2).</b>	Formal Shoes (same as Sports Shoes) are to be; <b>Fully black in colour</b> , including logos, soles, and laces (Prep may be velcro) <b>Made of leather or a leather-like material</b> (not canvas or soft fabric) <b>Suitable for running around and participating in sport and physical activity, completely covering the top of the foot (see page 2).</b>
Regulation tracksuit jacket and pants ( <i>cooler months only</i> )	Regulation tracksuit jacket and pants ( <i>cooler months only</i> )
Regulation College Bag	Regulation College Bag



## Years 1 to 6 Formal Uniform Policy

Years 1-6 Girls	Years 1-6 Boys
Regulation ink navy skirt with Unity College girl's blouse with tie OR Regulation Unity College girl's dress with tie	Regulation ink navy shorts and Unity College formal shirt
Regulation Unity College socks or ink navy tights (in winter only)	Regulation College knee high socks
Regulation Unity College Wool Jumper (cooler months only)	Regulation Unity College Wool Jumper (cooler months only)
Formal Shoes (same as Sports Shoes) are to be; <b>Fully black in colour</b> , including logos, soles, and laces <b>Made of leather or a leather-like material</b> (not canvas or soft fabric) <b>Suitable for running around and participating in sport and physical activity, completely covering the top of the foot (see page 2).</b>	Formal Shoes (same as Sports Shoes) are to be; <b>Fully black in colour</b> , including logos, soles, and laces <b>Made of leather or a leather-like material</b> (not canvas or soft fabric) <b>Suitable for running around and participating in sport and physical activity, completely covering the top of the foot (see page 2).</b>
Primary College Formal Hat	Primary College Formal Hat
Regulation College Bag	Regulation College Bag



# Prep to Year 6 Sports Uniform Policy

P-6 Girls and Boys

Regulation ink navy sports shorts

Regulation house sports shirt, socks and sport or formal hat

Sports Shoes (same as Formal Shoes) are to be;

**Fully black in colour**, including logos, soles, and laces (Prep may be velco)

**Made of leather or a leather-like material** (not canvas or soft fabric)

**Suitable for running around and participating in sport and physical activity**

No skate shoes or Volleys are to be worn with sports uniform – this is a workplace health and safety requirement.

Regulation tracksuit jacket and pants (cooler months only)



# UMS Uniform Shop

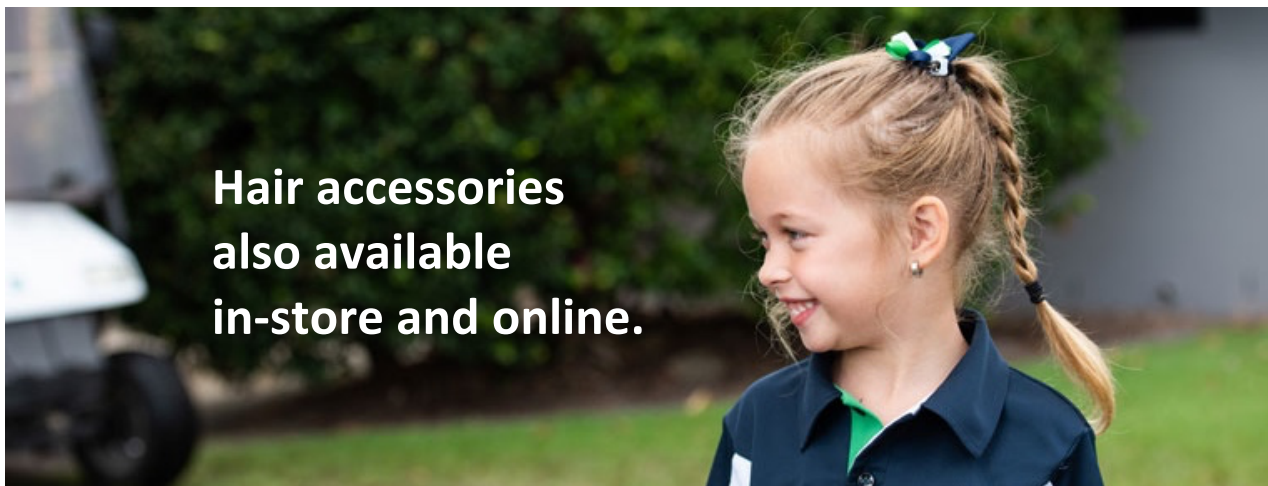
## Primary Items: Prep to Year 6



<p><b>Prep Polo Shirt</b></p>		<p><b>1-6 Primary Boys Formal Shirt</b></p>	
<p><b>P-12 Sport Shorts</b></p>		<p><b>1-6 Primary Boys Formal Shorts</b></p>	
<p><b>1-6 Primary Girls Formal Blouse</b></p>		<p><b>P-6 Primary Formal Hat</b></p>	
<p><b>1-6 Primary Girls Formal Skort</b></p>		<p><b>P-12 Sport Bucket Hat</b></p>	
<p><b>1-6 Primary Girls Formal Dress</b></p>		<p><b>1-12 Boys Knee High Formal Socks</b></p>	
<p><b>1-6 Primary Girls Formal Tie</b></p>		<p><b>1-12 Girls Formal Ankle Socks</b></p>	

<p><b>1-12 Wool Jumper</b></p>	
<p><b>P-12 House Polo Shirt</b></p>	
<p><b>P-6 Primary Reading Bag</b></p>	
<p><b>P-6 Primary Back Pack Bag</b></p>	

<p><b>P-12 Sport Socks</b></p>	
<p><b>P-12 Tracksuit Jacket</b></p>	
<p><b>P-12 Tracksuit Pants</b></p>	
<p><b>1-12 Girls Ink Navy Tights</b></p>	



## Recommended Shoes

